

Module 3: Reducing the energy consumption of a residential building with a smart home system

Information: Customer's residential building

The drawing (Fig. 1) shows the floor plan of the customer's single-storey residential building. It was built in the 1980s. The existing heating system consists of a gas boiler and panel radiators (Fig. 2 and Fig. 3) apart from the bathroom and toilet. The bathroom and toilet are heated by underfloor heating for reasons of comfort. Bathroom radiators are also installed here (Fig. 4).

The heating is controlled via an external thermostat to regulate the flow temperature and a room thermostat in the living room. The flat radiators all have thermostatic valves.

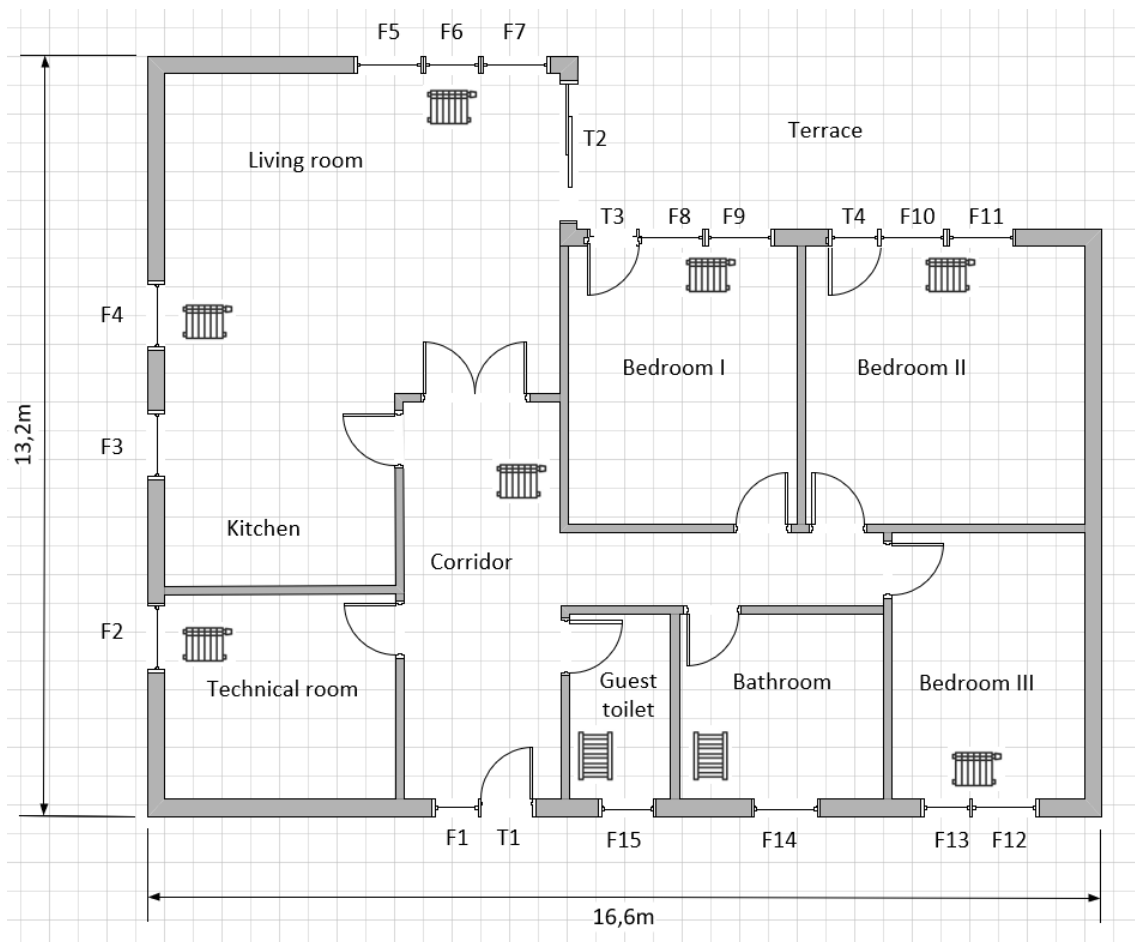


Fig. 1, floor plan

Drawing: M. Sorger



Fig. 2 and 3: Flat radiators

Picture: M. Sorger



Fig. 4: Bathroom radiator

Picture: M. Sorger